



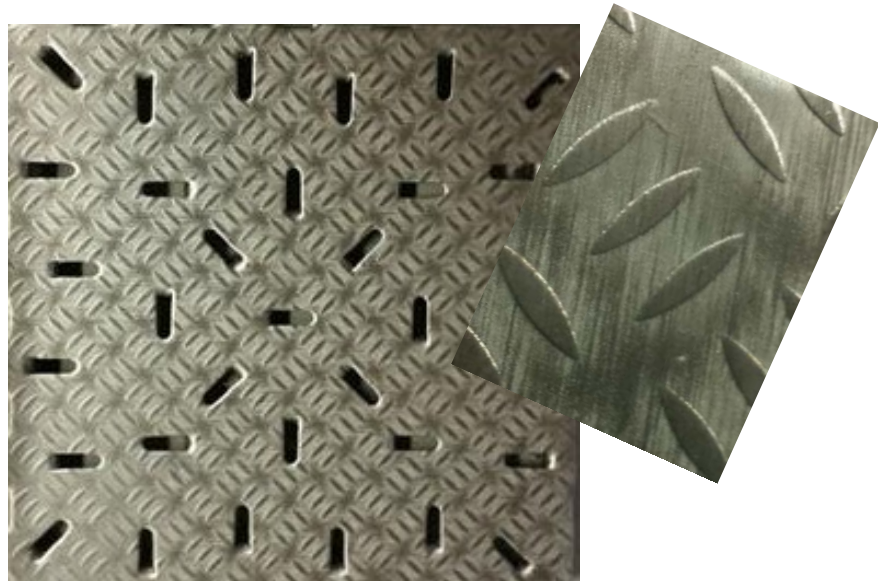
IML™-steel industrial floor panels

robust · economic · effective

IML Industrieboden GmbH · Am Waldpark 1 · 67122 Altrip/Rhein
phone: 0049 6236 3504 · fax: 0049 6236 2490 · info@iml-lehr.de · www.iml-lehr.de

IML™-steel industrial floor panels

— stainless steel, slip resistance R12 —



Technical specifications:

materials:	quality V2A quality V4A
dimensions:	297mm x 297mm
total height of plate:	25mm 16mm
material thickness:	3 mm
slip resistance:	R12
weight:	ca. 27.50 kg/m ²
calculation of quantity:	11 pcs./m ²

Technical changes reserved.

Advantages:

- non-slip R12 due to surface with embossed tears and longitudinal grinding
- low rolling resistance
- noble appearance