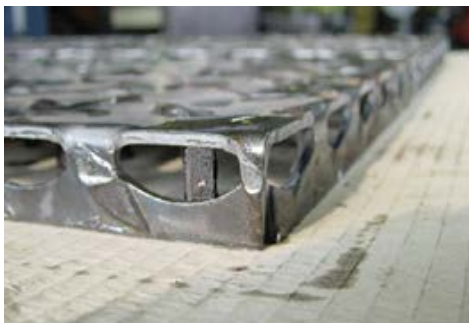
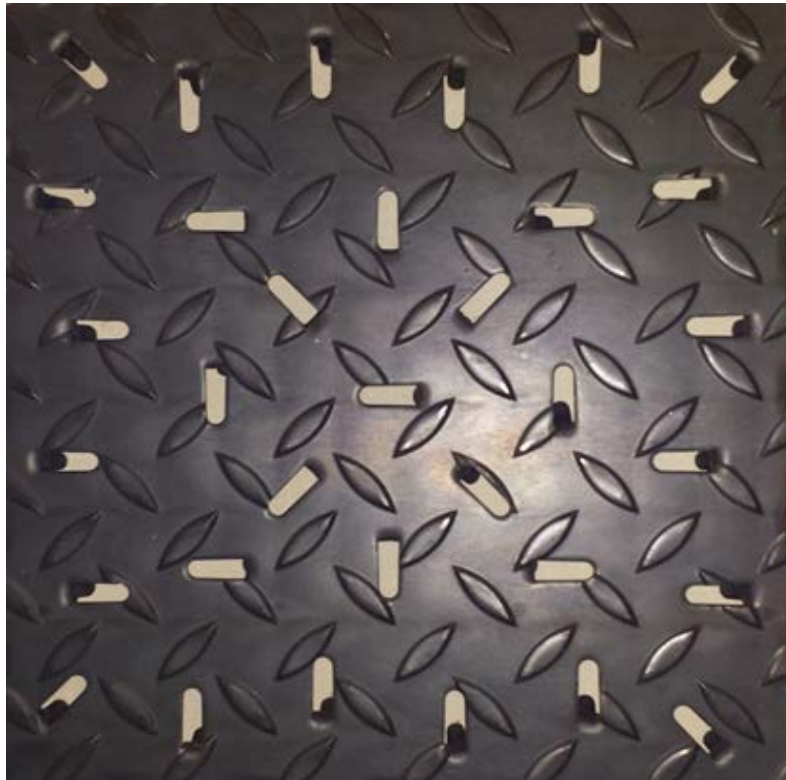




# IML™-steel industrial floor panels robust · economic · effective

IML Industrieboden GmbH · Am Waldpark 1 · 67122 Altrip/Rhein  
phone: 0049 6236 3504 · fax: 0049 6236 2490 · info@iml-lehr.de · www.iml-lehr.de

## IML™-steel industrial floor panels — with lug pattern —



**IML™**-steel industrial floor panels with lug pattern for most severe mechanical strain and high onset of oil and grease are used in the sectors of forging and casting, pressing plants, steel mills, and heavy machinery engineering.

## Technical specifications:

materials: warmgewalztes Spaltband  
Edelstahl V2A

dimensions: 297mm x 297mm x 25mm

material thickness: 3 mm / 4,5 mm (tear drop)

weight: ca. 33,00 kg/m<sup>2</sup>

calculation of quantity: 11 pcs./m<sup>2</sup>

Technical changes reserved.



**IML™**-steel industrial floor panels are made of 3.0 mm thick hot-rolled slit strip with a lug pattern of approx. 0.75 / 1.0 mm as anti-skid. The panels are punched out of one piece.



The arrangement of the rolled-on tears give the **IML™**-steel industrial floor panels a slip resistance even on greasy and damp surfaces.

- non-slip
- robust
- resistant to abrasion
- shockproof



**IML™**-steel industrial floor panels with lug pattern do not only provide safety for staff and machines, but are also extraordinary resistant and robust.



**IML™**-steel industrial floor panels are laid in a 50mm mortar bed with a spacing of 2-3mm.



### advantages:

- non-slip even with high oil and fat content
- particularly resistant and robust